



**27 March to 2 April 2022**

# **GUIDE TO THE EVENT**

## **COT RALLY**

for

## **COMPETING CREWS, SERVICE CREWS AND OFFICIALS**

*The information set down in this document is intended as a guide to crews, service crews and officials involved with the event. This information does not supersede the supplementary regulations, bulletins and other documents issued by the organisers and therefore cannot be used as the basis for a protest. If there is a conflict between this information and the regulations, the road books and the service crew instructions, the latter documents take precedent.*

**RALLY CONTROL EMERGENCY INCIDENT NUMBER**

**0487 869 345**

### **CIVIL CONTACTS**

Service	Number			
Emergency (all calls)	000			
Following telephone numbers are NOT emergency numbers				
	PARKES	CONDOBOLIN	ORANGE	BATHURST
Police	6862 9999	6895 2577*	6363 6399	6332 8699
Ambulance	For emergencies call 000			
Hospital	6861 2400	6895 2600	6369 3000	6300 5000
Fire Station	For emergencies call 000			



## PAST RESULTS – CLASSIC OUTBACK TRIAL 2009 TO 2018

2018

### Classic Category

1	Andrew Travis	David Travis	1984 Nissan Gazelle
5	Joost Van Cauwenberge	Jacques Castelein	1972 Porsche 911 Tuthill
2	Jorge Perez	Jose Volta	1978 Ford Escort Mk2



### Modern Category

50	Peter Neal	Craig Whyburn	1998 Subaru Impreza WRX
53	Peter Sweeney	Dan Murphy	1996 Subaru Impreze
52	Jamie Lawson	Michelle Lawson	1992 Holden Commodore



**Regularity Category**

=1	9	Phillip Blunden	Lynda Blunden	1964 Holden EH
=1	17	Bruce Power	Jill Robilliard	1939 Chevrolet Coupe
3	14	John Creighton	Lynda Creighton	1972 MGB GT

**2016****Classic Category**

1	Andrew Travis	David Travis	1984 Nissan Gazelle
10	Andy Crane	Dave Anderson	1970 Peugeot 504
27	Phillip Kerr	Jenny Cole	1971 Datsun 1600

**Modern Category**

52	Peter Neal	Craig Whyburn	1998 Subaru Impreza WRX
56	Bill Monkhouse	Andrew Booker	2006 Suzuki Vitara
53	Evan Vale	Caroline Vale	2010 Subaru Forester

**Cross Country Category**

61	Stephen Riley	John Doble	2014 Holden VF V8 Utility
63	Reg Owen	Russell Cairns	2014 Isuzu MU-X
64	Murray Young	Paul McBean	2002 Mitsubishi Pajero MN

**Regularity Category**

72	Debra McCormack	Leonie Kerr	1999 Mitsubishi Magna
71	Phillip McWhirter	Laurette McWhirter	1969 Morgan Plus 8

**2014****Classic Category**

34	Andrew Travis	David Travis	1971 Datsun 1600
1	Matt Swan	Paul Franklin	1987 Holden Commodore
32	Ian Swan	Val Swan	1974 Volvo 242 DL

**2012****Classic Category**

20	Matt Swan	Paul Franklin	1987 Holden Commodore
2	Steve Ashton	Ro Nixon	1972 Mitsubishi Colt Galant
25	Gary Williamson	Peter Batt	1968 Datsun 1600

**2010****Classic Category**

19	Andrew Travis	David Travis	Datsun 1600
17	Trevor Stilling	John Paine	Nissan Stanza
6	Andy Crane	John Fraser	Peugeot 504 ti

**2009****Classic Category**

2	Terry Naish	Ross Runnalls	1970 Datsun 1600
12	Steve Ashton	Ro Nixon	1972 Mitsubishi Colt Galant
32	Michael Pinckham	Tom Flegl	1982 Holden Commodore



**27 March to 2 April 2022**

#### MESSAGE FROM THE PROMOTER

Finally welcome to the 7th running of the Classic Outback Trial. It was only 33km south that the first COT started some 13 years ago. Starting in Forbes and ending in Tweed Heads at the World Rally Championship.

This is the 5th attempt to conduct this year's event and it is shaping up to be one of the best. It has been a frustrating time with the restrictions placed on everyone with the outbreak of the COVID-19 pandemic but we have endured all that has been placed in our way and we look forward to a great and safe event.

This is the 2nd running of the Regularity event and my thanks go to Steve Hollowood who has put together an outstanding course with some testing competition. Again, my thanks to the Endurance Rally Club of Australia for their continued support. Let's hope we will get another close competition and see if we can get another dead heat for first place.

Again we owe our gratitude and thanks to the property owners, NSW Forestry and the 13 shire councils for their assistance in allowing us to conduct the event.

The Shire Councils of Parkes, Orange and Bathurst have gone out of their way to assist us in planning, organising accommodation and for the many contacts that have allowed us to conduct this event and we offer our sincere appreciation for their assistance.

To the many officials that make the event happen, thank you for your time and professionalism in the way you conduct your roles. Also thanks go to David Officer and Steve Hollowood and Ross Runnalls, without them the event would not happen.

So all that is left to say is ..... enjoy this last Classic Outback Trial!

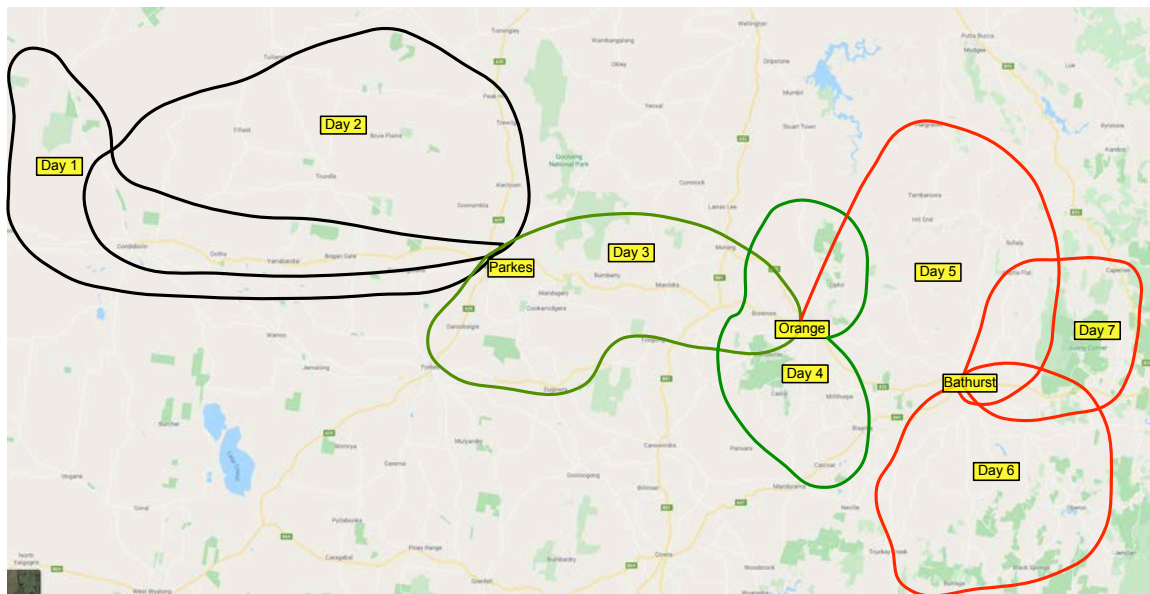


Phil Bernadou  
Promoter & Event Director



**27 March to 2 April 2022**

**THE SEVEN DAY COURSE**



## SPONSORS / SUPPORTERS

*It would not be possible to stage a motoring event such as the Classic Outback Trial without the support of these sponsors/supporters, whose details are on the event's website at [Our Partners](#)*

**Station Motel Parkes Mercure Motel Orange Rydges Motel Bathurst**



## **GUIDE TO THE EVENT LIST OF CONTENTS**

### **SECTION A – ADMINISTRATION**

- A1: OVERALL SCHEDULE OF ACTIVITIES
- A2: EVENT HEADQUARTERS / RALLY CONTROL
- A3: OFFICIAL NOTICE BOARDS
- A4: THE TEAM BEHIND THE TRIAL
- A5: SOME DO'S AND DONT'S TO OBSERVE

### **SECTION B – MEDICAL / FIRST AID**

- B1: SAFETY FOR CREWS
- B2: BREATH TESTING FOR ALCOHOL
- B3: WEATHER, DAYLIGHT AND ATTIRE
- B4: SAFETY & FIRST AID TIPS
- B5: MOTORSPORT AUSTRALIA INSURANCE
- B6: COVID-19

### **SECTION C – SERVICES**

- C1. VEHICLE ODOMETER CHECK COURSE
- C2. SERVICING AREAS
- C3. CAR WASHING
- C4. TRAILER PARKING
- C5: LUNCHESES DURING THE EVENT

### **SECTION D: FUNCTIONS**

- D1: CREW and SERVICE CREW BRIEFING SATURDAY
- D2: CEREMONIAL START OF EVENT (Prior to Prologue) – SATURDAY 26th March
- D3: WELCOME FUNCTION
- D4: START OF EVENT
- D5: FINISH OF EVENT
- D6: PRESENTATION FUNCTION

### **SECTION E: DOCUMENTATION & SCRUTINY**

- E1: DOCUMENTATION (refer to SR501)
- E2: SCRUTINY (refer to SR502 & 503)

### **SECTION F – COURSE STATISTICS**

- F1: START/FINISH TIMES
- F2: SUMMARY OF DISTANCES
- F3: REFUEL INFORMATION

### **SECTION G: DURING-EVENT ACTIVITIES**

- G1: PROLOGUE
- G2: DAILY STARTS
- G3: FINISH AT END OF EACH DAY (Sunday to Friday)

### **SECTION H: COMPETITION ISSUES**

- H1: START ORDER (SR607)
- H2: ROAD BOOKS / MAP BOOKS / SERVICE CREW INSTRUCTIONS



- H3: COURSE CREWS
- H4: ASSISTANCE IN A SPECIAL STAGE
- H5: SPEED LIMITS
- H6: GATES
- H7: SERVICE CREWS
- H8: SCORES AND RESULTS (SR802, 803 & 804)
- H9: DAN MURPHY AWARD - SPIRIT OF THE CLASSIC OUTBACK TRIAL AWARD

#### **SECTION I: INFORMATION CHANNELS AND PUBLICITY**

- I1: THE CLASSIC OUTBACK TRIAL WEBSITE
- I2: OTHER WEBSITE POSTS
- I3: FOLLOWING' THE COT WEBSITE
- I4: COT22 ON SOCIAL MEDIA
- I5: USING SOCIAL MEDIA
- I6: REPORTING DURING THE EVENT – OFFICIAL REPORTERS AND PHOTOGRAPHERS
- I7: FORMAL PHOTOGRAPH OF EACH CAR AT THE START ARCH BEFORE THE START

#### **SECTION J: EVENT BOOK**

- J1: SAVE THE BOOK

#### **SECTION K: RALLYSAFE**

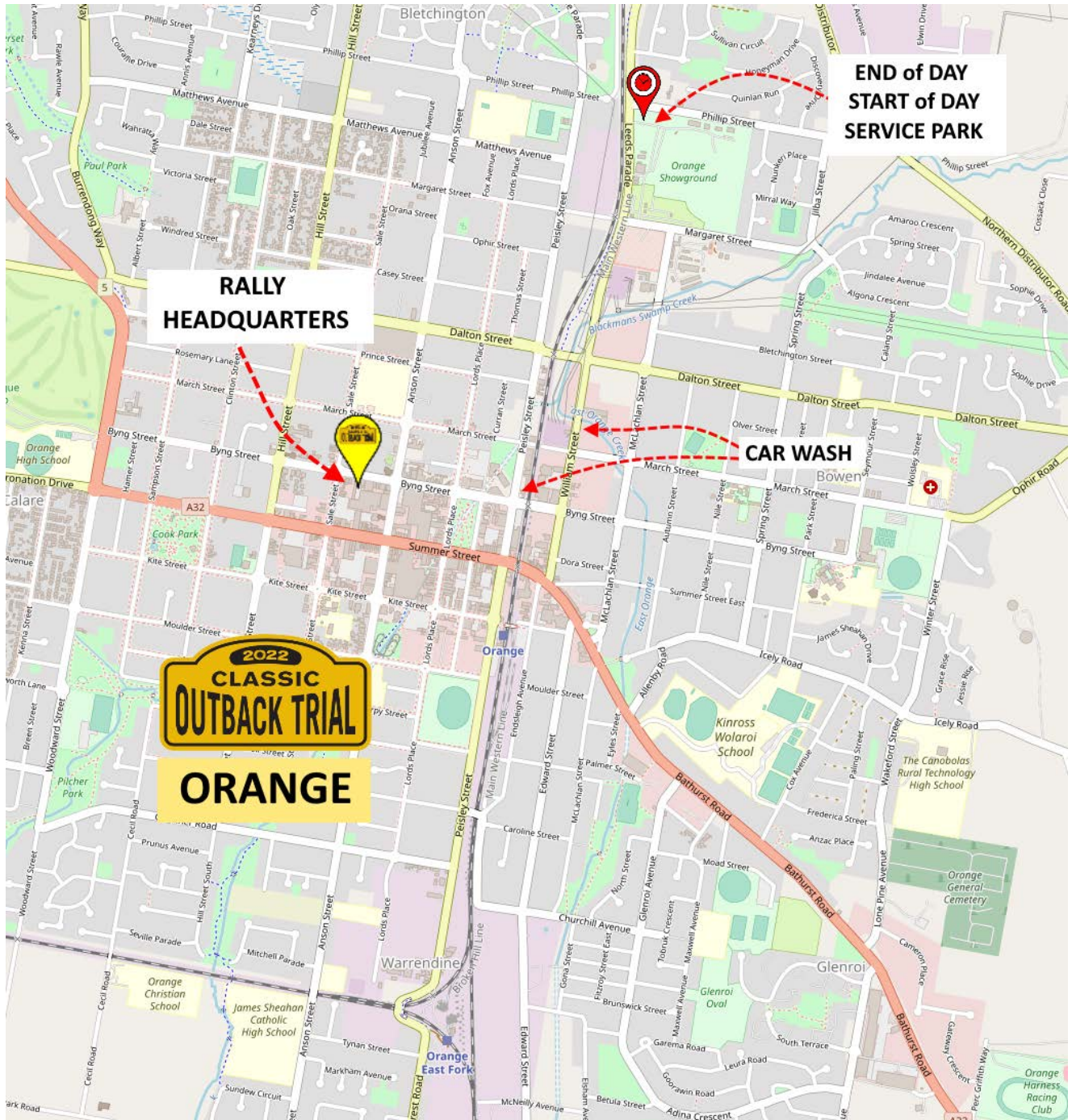


## PARKES



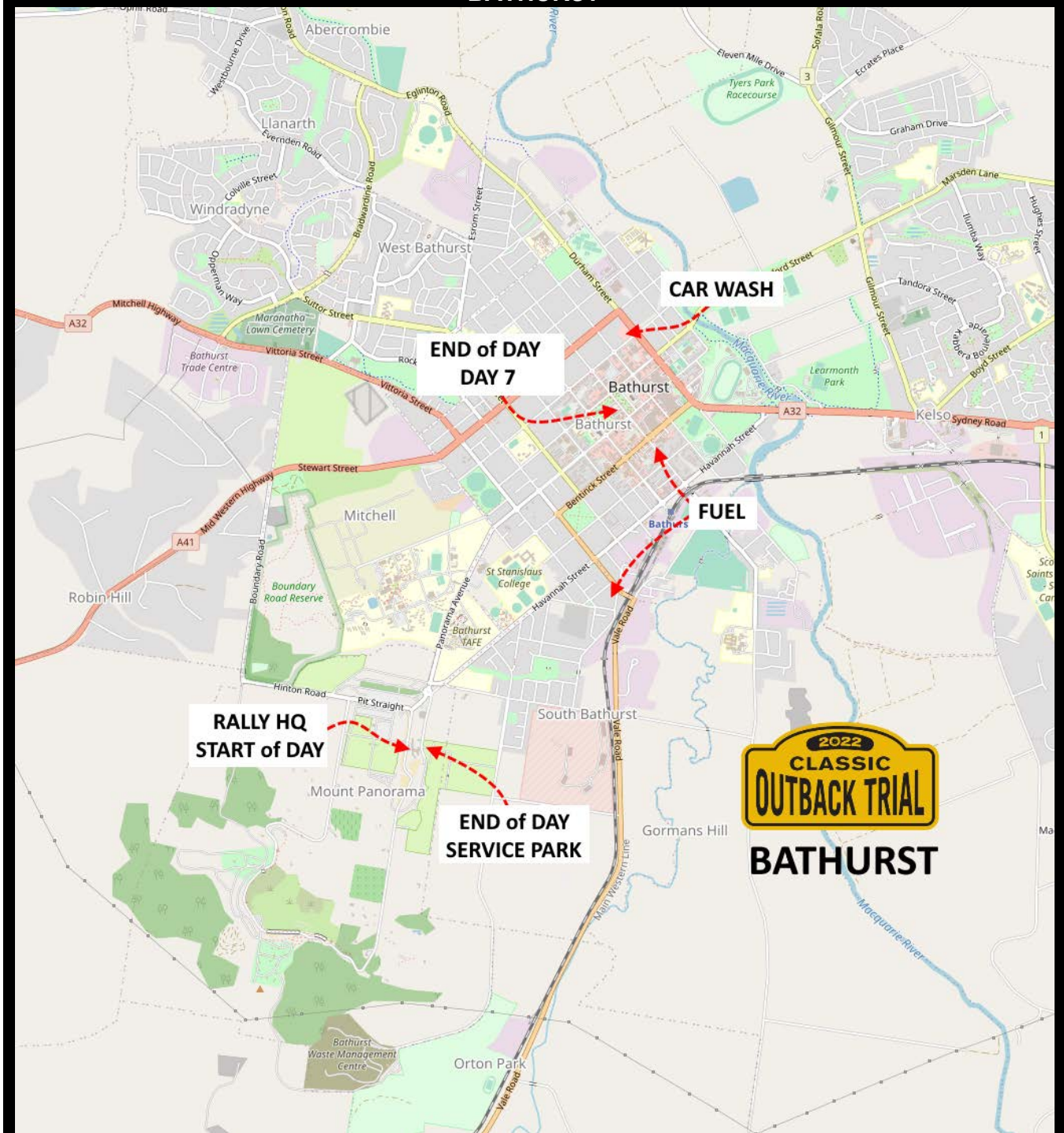


# ORANGE





# BATHURST



## GUIDE TO THE EVENT

Legend: SR = Supplementary Regulations

### SECTION A: ADMINISTRATION

**A1. OVERALL SCHEDULE OF ACTIVITIES** (subject to change due to changing circumstances)  
*Times are for the first vehicle; add approximately 1 ½ hours for last vehicle plus late time of 60 minutes.*

*March 2022 – times are subject to change*

DAY	DATE	TIME	ACTIVITY	LOCATION/COMMENTS
Thu	24	1500	Rally Headquarters opens	Parkes – International Motel
		2000	Rally Headquarters closes	Parkes – International Motel
Fri	25	0730 – 2000	Rally Headquarters opens	Parkes – International Motel
		0830 – 1800	Documentation	Parkes – Showground – at allocated times
		0830 – 1800	Scrutiny	Parkes – Showground – at allocated times
		1800 – 1900	Officials – Road Crew Briefing	Parkes – Showground
		2000	Rally Headquarters closes	Parkes – International Motel
Sat	26	0800	Rally Headquarters opens	Parkes – International Motel
		0830 – 1000	Documentation	Parkes – Showground – at allocated times
		0830 – 1100	Scrutiny	Parkes – Showground – at allocated times
		1200 – 1230	Rally – Competitor Briefing	Parkes – Leagues Club
		1300 – 1330	Regularity – Competitor Briefing	Parkes – Leagues Club
		1300 – 1500	Rally – Ceremonial Start (Including Regularity)	Parkes – Near Services Club
		1430 – 1600	Rally Prologue & Regularity Shakedown	Parkes – Gunningbland State Forest
		1800 – 1900	Welcome Function	Parkes – Leagues Club
		1800	Day One Start Order Posted	Parkes – Leagues Club & on website
		1800	Official Entry List posted, with Vehicle Classes	Parkes – Leagues Club & on website
		1800	Rally Headquarters closes	Parkes – International Motel
Sun	27	0730	Rally Headquarters opens	Parkes – International Motel
		0745	First crews report to start area	Parkes – Showground
		0800 – 0940	Rally – cars start Day One	Parkes – Church Street
		0900 – 0920	Regularity – cars start Day One	Parkes – Showground
		1205 – 1225	Regularity – cars arrive lunch and service	Condobolin – Showground
		1240 – 1445	Rally – cars arrive lunch and service (45 mins)	Condobolin – Showground
		1335 – 1350	Regularity – cars arrive end of Day One	Forbes – McFeeters Car Museum
		1600 – 1730	Rally – cars arrive end of Day One	Parkes – Showground
		2000	Day One scores & Day Two start order	Posted on website
		2000	Rally Headquarters closes	Parkes – International Motel
Mon	28	0730	Rally Headquarters opens	Parkes – International Motel
		0730	First cars report to start area	Parkes – Church Street
		0800 – 0930	Rally – cars start Day Two	Parkes – Church Street
		0900 – 0920	Regularity – cars start Day Two	Parkes – Church Street
		1235 – 1430	Rally – cars arrive lunch & service (45 mins)	Condobolin – Showground
		1240 – 1300	Regularity – cars arrive lunch & service	Condobolin – Showground
		1535 – 1555	Regularity – cars arrive end of Day Two	Parkes – Showground
		1535 – 1735	Rally – cars arrive end of Day Two	Parkes – Showground
		1900	Day Two scores & Day Three start order	Posted on website
		1900	Rally Headquarters closes	Parkes – International Motel
Tue	29	0800	Rally Headquarters opens	Orange – Mercure Motel
		0800	First cars report to start area	Parkes – Church Street
		0830 – 0850	Regularity – cars start Day Three	Parkes – Church Street
		0900 – 1030	Rally – cars start Day Three	Parkes – Church Street

		1100 – 1130	Regularity – cars arrive lunch & service	Molong – Showground
		1435 – 1630	Rally – cars arrive lunch & service (45 mins)	Molong – Showground
		1325 – 1345	Regularity – cars arrive end of Day Three	Orange – Showground
		1435 – 1630	Rally – cars arrive end of Day Three	Orange – Showground
		1900	Day Three scores and Day Four start order	Posted on website
		2000	Rally Headquarters closes	Orange – Mercure Motel
Wed	30	0830	Rally Headquarters opens	Orange – Mercure Motel
		0900	First cars report to start area	Orange – Showground
		0930 – 1100	Rally – cars start Day Four	Orange – Showground
		1045 – 1105	Regularity – cars start Day Four	Orange – Showground
		1130 – 1305	Rally – cars arrive lunch & service (45 mins)	Carcour – Showground
		1320 – 1340	Regularity – cars arrive lunch & service	Cancour – Showground
		1410 – 1600	Rally – cars arrive end of Day Four	Orange – Showground
		1505 – 1525	Regularity – cars arrive end of Day Four	Orange – Showground
		1800	Provisional Results for Days one to Four	Posted on website
		1800	Day Four scores and Day Five start order	Posted on website
		1900	Rally Headquarters closes	Orange – Mercure Motel
Thu	31	0800	Rally Headquarters opens	Bathurst – Rydges Motel
		0800	First cars report to start area	Orange – Showground
		0830 – 0850	Regularity – cars start Day Five	Orange – Showground
		0900 – 1030	Rally – cars start Day Five	Orange – Showground
		1115 – 1135	Regularity – cars arrive lunch & service	Sofala
		1305 – 1450	Rally – cars arrive lunch & service (45 mins)	Sofala
		1340 – 1400	Regularity – cars arrive end of Day Five	Bathurst – Opposite Rydges
		1505 – 1650	Rally – cars arrive end of Day Five	Bathurst – Opposite Rydges
		1900	Day Five scores and Day Six start order	Posted on website
		2000	Rally Headquarters closes	Bathurst – Rydges Motel
Fri	1 April	0830	Rally Headquarters opens	Bathurst – Rydges Motel
		0830	First cars report to start area	Bathurst – Opposite Rydges
		0900 – 1030	Rally – cars start Day Six	Bathurst – Opposite Rydges
		1015 – 1035	Regularity – cars start Day Six	Bathurst – Opposite Rydges
		1125 – 1300	Rally – cars arrive lunch & service (45 mins)	Black Springs
		1325 – 1345	Regularity – cars arrive lunch & service	Black Springs
		1505 – 1650	Rally – cars arrive end of Day Six	Bathurst – Opposite Rydges
		1520 – 1540	Regularity – cars arrive end of Day Six	Bathurst – Opposite Rydges
		1900	Day Six scores and Day Seven start order	Posted on website
		2000	Rally Headquarters closes	Bathurst – Rydges Motel
Sat	2	0900	Rally Headquarters opens	Bathurst – Rydges Motel
		0915	First cars report to start area	Bathurst – Rydges
		0945 – 1005	Regularity – cars start Day Seven	Bathurst – Rydges
		1000 – 1130	Rally – cars start Day Seven	Bathurst – Rydges
		1135 – 1155	Regularity – cars arrive holding area	Bathurst – Information Centre
		1235 – 1410	Rally – cars arrive holding area	Bathurst – Information Centre
		1255	Regularity – first car leaves holding area for	Bathurst – Information Centre
		1315	Rally – first cars leaves holding area for	Bathurst – Russell Street
		1300	Regularity – first car under Arch	Bathurst – Russell Street
			Rally – first car under Arch	Bathurst – Russell Street
		1600	Provisional Results	Posted on website
		1830	Rally Headquarters closes	Bathurst – Rydges Motel
		1830 – 2230	Awards presentation	Bathurst – Panthers Club



## A2: EVENT HEADQUARTERS / RALLY CONTROL

Rally Control / Event Headquarters will be based at the following locations:

Day/Date March 2022	Location		Open	Close
Thursday 24	Parkes	International Motel	1500	2000
Friday 25	Parkes	International Motel	0730	2000
Saturday 26	Parkes	International Motel	0730	1800
Sunday 27	Parkes	International Motel	0730	2000
Monday 28	Parkes	International Motel	0730	1900
Tuesday 29	Orange	Mercure Motel	0800	2000
Wednesday 30	Orange	Mercure Motel	0830	1900
Thursday 31	Bathurst	Rydges Mt Panorama	0800	2000
Friday 1 April	Bathurst	Rydges Mt Panorama	0830	2000
Saturday 2	Bathurst	Rydges Mt Panorama	0830	1800
Sunday 3	Bathurst	Rydges Mt Panorama	0900	1000

The Rally Control and Headquarters officials will be available in accordance with the above published Rally Control Opening Times, but the Clerk of Course mobile telephone will be turned on at all times; only urgent calls should be made to this telephone between 2000 and 0730.

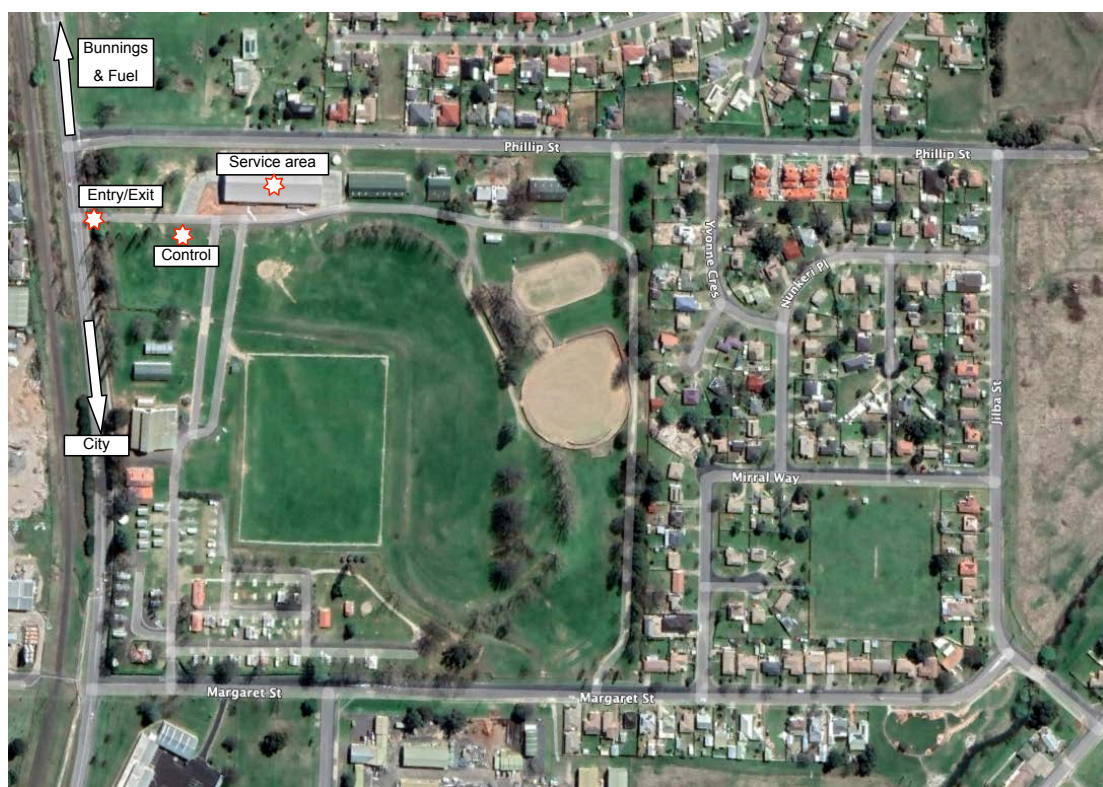
PARKES              Showgrounds





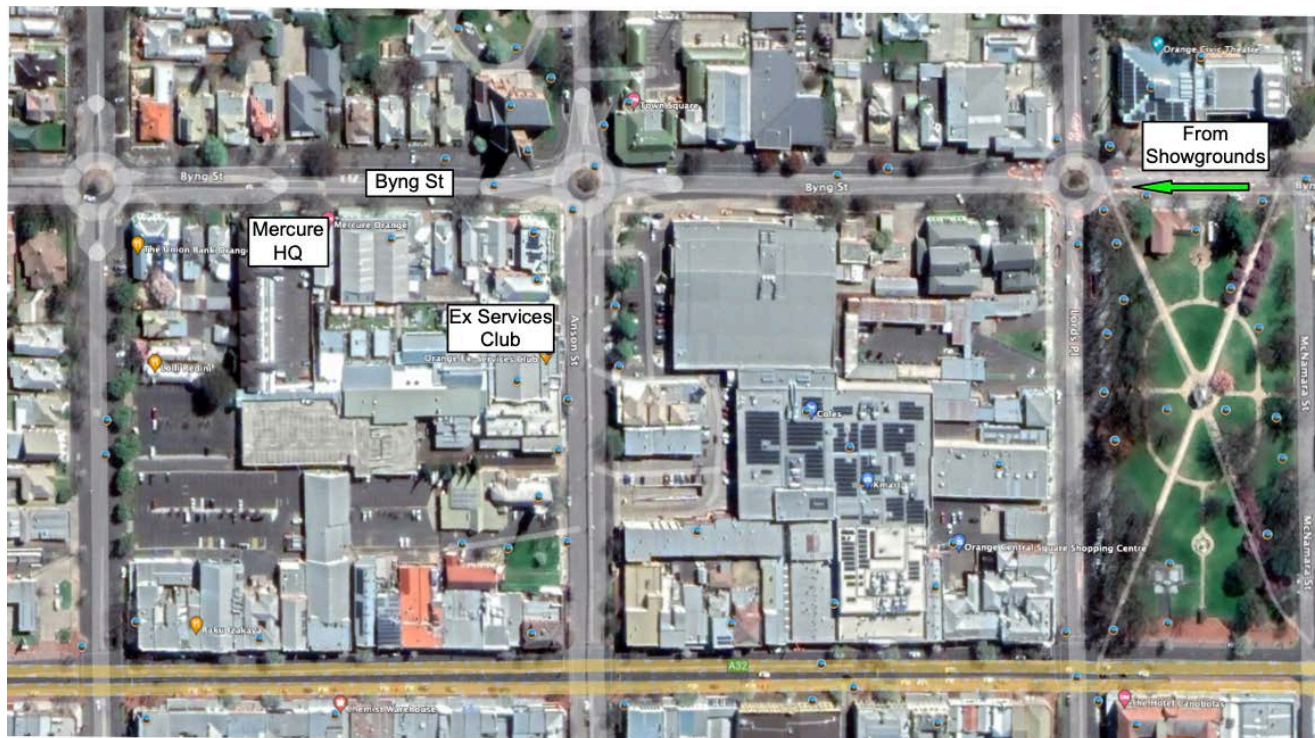
ORANGE

Showgrounds



ORANGE CITY

HQ



BATHURST

HQ





### A3: OFFICIAL NOTICE BOARDS

It is the responsibility of crews to check the notice board for any information that may be issued by the organisers. Stage times and results for a Day, together with the start order for next Day, will be posted on these boards each night.

The 'Official Notice Board' will be located as follows:

Throughout the event at:	On the <b>COT</b> website at:
Rally Headquarters	<a href="http://www.classicoutbacktrial.com.au">www.classicoutbacktrial.com.au</a>

### A4: THE TEAM BEHIND THE TRIAL

#### Organising Committee

Promoter/Event Director	Philip Bernadou	<a href="mailto:pora1@bigpond.net.au">pora1@bigpond.net.au</a>	0412 498 602
Secretary	Louise Bernadou	<a href="mailto:Louise.bernadou@gmail.com">Louise.bernadou@gmail.com</a>	0412 379 376
Assistant Clerk of Course	David Officer	<a href="mailto:dintaofficer@gmail.com">dintaofficer@gmail.com</a>	0409 521 319

#### HQ/Rally Control Officials

Clerk of Course	Philip Bernadou
Competitor Relations Officer (CRO)	Alan Baker
RallySafe Controller/Incident Controller	Alex Ross
Event Secretary	Kaye Kilsby
Results Team	Garry Searle
Chief Scrutineer	Graeme Palmer
Day Start / Finish Control Official	Bruce Morisset
Motor Sport Australia CATO (see B2 below)	Drew Wilson

#### Competitor Relations Officer

The Competitor Relations Officer (CRO) will be located as follows:

Fri 25 and Sat 26	Documentation/Scrutiny/HQ/Welcome Function
Sun 27 to Sat 2	At start and finish of each day then at HQ

The CRO is available to be contacted on any issue affecting crews and will refer issues as necessary to the Clerk of Course (and other senior officials). Alan Baker – 0407 313 128

#### Photographers/Reporters

Photographer	Ian Smith, Chris Brown
Reporter	Bruce Keys

#### Course Crews

Zero	David Officer, Ross Runnalls (MSA Checker)
Sweep	Jim Reddiex, Barry Neuendorf, Andrew Reddiex
Recovery	Peter Batt, Michael Barrow

#### Road Crews

Crew A	Bill Bennett/Ian Barton & Glen McAliece/Anne Mullholland
Crew B	Rick Hartmann/Pauline Hartmann & Trevor Fisher/Ros Fisher
Crew C	Kaye Kilsby/Lui MacLennan & Owen Polanski/Jean Dunkley-Smith
Crew D	Peter Millear/Hugh Millear & Bob Carpenter/Don Guyer
Crew E	Bob Watson/Jenny Cuthbert & Ian Ellis/Peter Corkran
Crew F	Peter Fraser

#### Medical Intervention Vehicle Crews

MIV 1	Dr Stephen Gaggin
MIV2	TBA

### Motorsport Australia Officials

Stewards	Alan Denney (Chief) and Peter Lambie
Checker	Ross Runnalls

#### A5: SOME DO'S AND DONT'S TO OBSERVE

**DO** observe the COVID requirements.

**DON'T** speed on public roads. Keep within the speed limit and respect the applicable traffic laws. Speeding crews are liable to incur the normal civil traffic offence penalties as well as event penalties.

**DO** close gates when required to do so.

**DON'T** leave each day without sufficient water and some food in case of a lengthy stop by the side of the road.

**DO** show courtesy to other road users, and to locals in the area through which we pass – after all, they live there and we might want to return some day. Also, remember your car is 'marked' with decals so they know who you are.

**DON'T** consume alcohol during the competition, or carry firearms – you will be penalised if you do.

**DO** obey the instructions of the officials – this will make for the conduct of a smoother event.

**DON'T** litter – be tidy and put your rubbish in containers and then into an appropriate bin. Never bury your rubbish as animals will just dig it up and spread it around.

**DO** report any incident or accident with another vehicle, stock or property. Use the event's Incident Sheet and hand it in at the event's Headquarters (or to the Competitor Relations Officer).

**DON'T** drop oil anywhere – put it in a container and dispose of it properly at the next service station or at the appropriate container at the Service Park.

**DO** consult the Competitor Relations Officer for help with any problem.

## SECTION B: MEDICAL / FIRST AID

#### B1: SAFETY FOR CREWS

Motorsport Safety & Rescue is providing a medical team, comprising two 'Medical Intervention Vehicles' (MIV) and four medical staff (one doctor, three paramedics all experienced in rallies) to provide coverage for the special stages.

Crew members will be asked to complete a basic medical declaration form at documentation for use by the medical team should they need to administer medical assistance. At documentation these forms are to be placed in a sealed box by the crew member/official and this box will only be opened by the medical staff; the forms will be destroyed on completion of the event.

The medical team members are available throughout the event for any occasion requiring medical attention (eg: illness) and they may be contacted at any time for assistance through the Clerk of the Course.

#### B2: BREATH TESTING FOR ALCOHOL

*Please read and understand this*

Competitors and officials are advised that testing will be carried out by MOTORSPORT AUSTRALIA Authorised Testing Officials (CATO). Under the MOTORSPORT AUSTRALIA 'Alcohol Testing Policy', available on the MOTORSPORT AUSTRALIA website (at 'Motor Sport' > 'Safety & Integrity'), any participant who breaches the policy will be excluded from the specific day of the event and this would mean a vehicle could not start a day, nor an official to carry out duties for the day.

**A limit of 0.01BAC will apply.** If a reading is higher than 0.01 a confirmation test will be undertaken no sooner than 15 minutes and no later than 20 minutes after the first test. In the meantime the participant is not to eat, drink, smoke or put anything in the mouth (eg: chewing gum). If the result of the second test is positive (that is, the reading is higher than 0.01) the participant will not be permitted to continue with an involvement with the event for the rest of that day. If the reading is negative (that is, 0.01 or lower) the participant may continue in the event.

#### B3: WEATHER, DAYLIGHT AND ATTIRE

The average statistics\* for the weather in March are:

Location	Temperature (C)		Monthly Rainfall (mm)		Mornings		Evenings	
	Max (Ave)	Min (Ave)	Mm (Ave)	No Days (Ave)	First Light	Sunrise	Sunset	Last Light
Parkes	28	15	29	4	0650	0715	1906	1932
Condobolin	25	20	42	4				

Orange	19	9	62	14				
Bathurst	25	11	54	5				

\*BOM.gov.com.au

As the weather can have chilly nights and mornings, you need to dress accordingly. Best to have clothing that can be 'peeled off' as the day warms and put on as the evening approaches and gets colder.

#### B4: SAFETY & FIRST AID TIPS

Most medical problems that arise with such events can be relieved by simple, effective management.

##### **Dehydration** (Courtesy of Motor Sport Safety & Rescue Pty Ltd)

Did you know that a loss of fluid, equal to 2% of body mass is sufficient to cause significant decrease in performance and increases the risk of symptoms such as nausea, vomiting, diarrhoea, and other stomach/gut symptoms?

Typically athletes, in high intensity exercise in hot conditions, can lose 2 -3 litres per hour. In some of the hot rallies in Asia there have been examples of crews losing up to 4 kilos each per day. Once lost, it is very difficult to reverse. As a general rule we should be aiming to keep fluid loss to less than 1kg.

Maintaining hydration can be achieved by adopting a planned approach during the event, by drinking plenty of suitable fluids. We recommend that for every litre of water consumed, you follow-up with a 500ml electrolyte drink - *it is important to find an electrolyte drink that you find palatable.*

There are two simple ways of ensuring that you are drinking enough and they are:

- If your urine is clear (*this is a reliable indicator of sufficient fluid intake*)
- You should urinate several times a day
- If practical, weigh yourself at the start and the finish of each day to check on any weight loss.

The FIA Institute of Motor Sport Safety recommends avoiding:

- Aerated Drinks
- Large quantities of fruits
- Large amount of confectionery
- Alcohol (*proven as a diuretic and will increase fluid loss*)
- Foods which are difficult to digest; melon, cucumber, cabbage, onion, spices, rich, or fried foods.

The Institute recommends:

- Non – aerated water
- Fruit juice
- Energy drinks
- Sugars absorbed slowly (pasta, rice, bread)
- Dried fruit

*A note on coffee – the consumption of caffeine has now **NOT** been proven to impact on dehydration.*

As a means of early identification of any health problem drivers, navigators and service crew should take notice of each other's mental and physical wellbeing, subtle changes can be an early indicator of the onset of dehydration.

*Avoid becoming dehydrated. Cases of dehydration require 150% of fluid loss to be replaced over a 2-6 hour period - this is not easy to achieve during the event.*

#### **First aid tips on burns, snake bites and stings:**

##### **Burns**

- Immediately cool the burn site by flooding with water;
- Remove excess clothing at the burn site, but DO NOT pull burnt skin / clothing apart;
- If the burn is the size of the patients palm or is to the face or neck, then obtain medical assistance immediately;
- For all other burns, continue cooling, being careful not to overcool;
- Cover / dress the burnt site and assess in 24 hours. Seek medical advice if uncertain.

##### **Snake Bites** (possible in March)

- Assume all snake bites are poisonous and always believe someone when they say they have been bitten by a snake, even though you may not see any puncture marks;



- Management of a snakebite – Pressure immobilisation method:
  - Rest the casualty;
  - Don't panic;
  - Apply direct pressure over the bitten area;
  - Apply a firm bandage over the bite area first, then bandage down the limb and continue to bandage the full length of the limb;
  - Immobilise the limb with a splint and call for medical aid.

REMEMBER – Do not wash the bitten area. Do not remove the bandage. Do not elevate the limb. Do not walk or run – get help.

### **Bee Stings**

If the bee sting barb is still in the skin, remove it by brushing to one side or scraping the skin to remove. NEVER PULL the sting out, as more venom will be injected into the skin.

- Raise the affected site if possible and apply an ice compress to limit swelling.
- Persons allergic to bee stings should be treated as for snakebite. These people need to be observed closely for airway, breathing and circulation associated problems
- If breathing or circulation fails, start resuscitation at once and seek urgent medical attention
- Stings around the neck and mouth area are very dangerous as they can cause an airway obstruction. Apply ice packs and seek urgent medical attention.

## **B5. MOTORSPORT AUSTRALIA INSURANCE**

Refer to SR205. Remember:

- The property damage excess payable by a competitor is \$1,000.
- Up to 5 additional units of personal accident insurance are available to all crew members. For details see the MOTORSPORT AUSTRALIA website. *Individual MOTORSPORT AUSTRALIA members and licence holders can elect to have additional coverage provided for personal accident insurance. The increased coverage, purchased on a 'unit' basis, where one 'unit' of benefits consists of:*
  - \$50,000 death and capital benefits (permanent disability to scale)
  - \$250 per week loss of Income benefit, payable for up to a maximum period of 156 weeks, subject to a 7 day excess – maximum benefit payable is 85% of normal weekly income earned;
  - \$1,000 non-Medicare medical expense benefit, nil excess. The maximum number of additional cover 'units' that can be purchased is five. The same terms and conditions that apply to the group cover apply to the additional cover.

## **B6 COVID-19**

- The COVID-19 situation in NSW is still very volatile so we want attendees to take their own health status very seriously.
- We recommend everyone, all competitors, service crews and officials, to be fully vaccinated in line with Government Health Officers' recommendations before attending the event.

Under no circumstances should anyone with symptoms consistent with COVID-19 attend the event. This includes any fever, respiratory symptoms, shortness of breath, sore throat, cough, fatigue, or sudden lack of sense of smell or taste.

- It is highly recommended that if any attendee exhibits symptoms consistent with COVID-19 prior to the event then the individual should take a COVID-19 test through an approved testing clinic or a Rapid Antigen Test.

To comply with NSW Government COVID-19 restrictions and to provide a safe environment for all involved in the event, these requirements must be followed:

- Masks MUST be worn in ALL indoor settings, including
- Document Verification, Scrutiny and Rally HQ.
- during Competitor and Officials briefings,
- at the Welcome function and
- other indoor retail and hospitality venues.
- Please maintain social distancing with all other attendees.
- Hand sanitiser will be provided at key locations and should be used where available.
- Some event venues may have additional requirements. The Panthers Club hosting the Presentation requires photo-identification.
- COVID rules and restrictions may change in the leadup to the event. Any changes will be notified in a Bulletin and

discussed at event briefings.

For more information, see NSW Government COVID-19 Rules, at <https://www.nsw.gov.au/covid-19/stay-safe/rules>.

## SECTION C: SERVICES

### C1. VEHICLE ODOMETER CHECK COURSE

The 5km Odometer Check Course will be located on the road to Orange. The organisers course check odometer read 5km over this course. The Check Course can be used in reverse.

The event's odometer start and finish signs will be erected by the organisers by 1000 hours on Thursday 24 March.



Start (Green dropper):

- -23.697135 133.816485
- Marked by 'ODO CHECK START' sign

Finish (Red dropper):

- -23.707340 133.769890
- Marked by 'ODO CHECK FINISH' sign

### C2. SERVICING AREAS

Parkes – Showground (refer to sketch on page 15). Mains power is available

Orange – Showgrounds (refer to sketch on page 16) It is compulsory to have protection (tarpaulin, thick cardboard) under the car as in new concrete floor building; a fine will be given if it has to be cleaned

Bathurst – The service area is at the end of day control opposite Rydges

### C3. CAR WASHING

**Parkes** Quickshine Car Wash, 28 Welcome Street. 0407 171 711 24 hours  
**Orange** Pete's Car Wash, corner Byng and Peisley Street. 02 6361 8338 24 hours  
**Bathurst** Bathurst Carwash, 73 Durham Street. 02 6332 6762 24 hours

### C4. TRAILER PARKING

**Parkes** Showground  
**Orange** Showgrounds  
**Bathurst** service area - A fenced secure area behind Rydges.  
Crews are advised to ensure trailers are secured from removal by unauthorised persons.

### C5: LUNCHES DURING THE EVENT

Lunches may be purchased each day around the course and crews/service crews are requested to use the facilities provided:

Sunday	Monday	Tuesday	Wednesday	Thursday	Friday
Condobolin	Condobolin	Molong	Carcoar	Sofala	Black Springs

On each day 45 minutes will be allowed for service and lunch; on Saturday the finish will be in Bathurst at 1300 (first car) – no lunch arrangements will be made by the organisers

## SECTION D: FUNCTIONS

### D1: CREW & SERVICE CREW BRIEFING – SATURDAY 26 MARCH

This briefing will be conducted as follows:

- Parkes Leagues Club, 192 Clarinda Street
- 12 Noon



### D2: CEREMONIAL START OF EVENT (Prior to Prologue) – SATURDAY 26 MARCH

A ceremonial start to the event will be conducted prior to leaving for the Prologue (see sketch above)



- first COT car is to pass under the arch at 1300 and the remaining cars at two minute intervals;



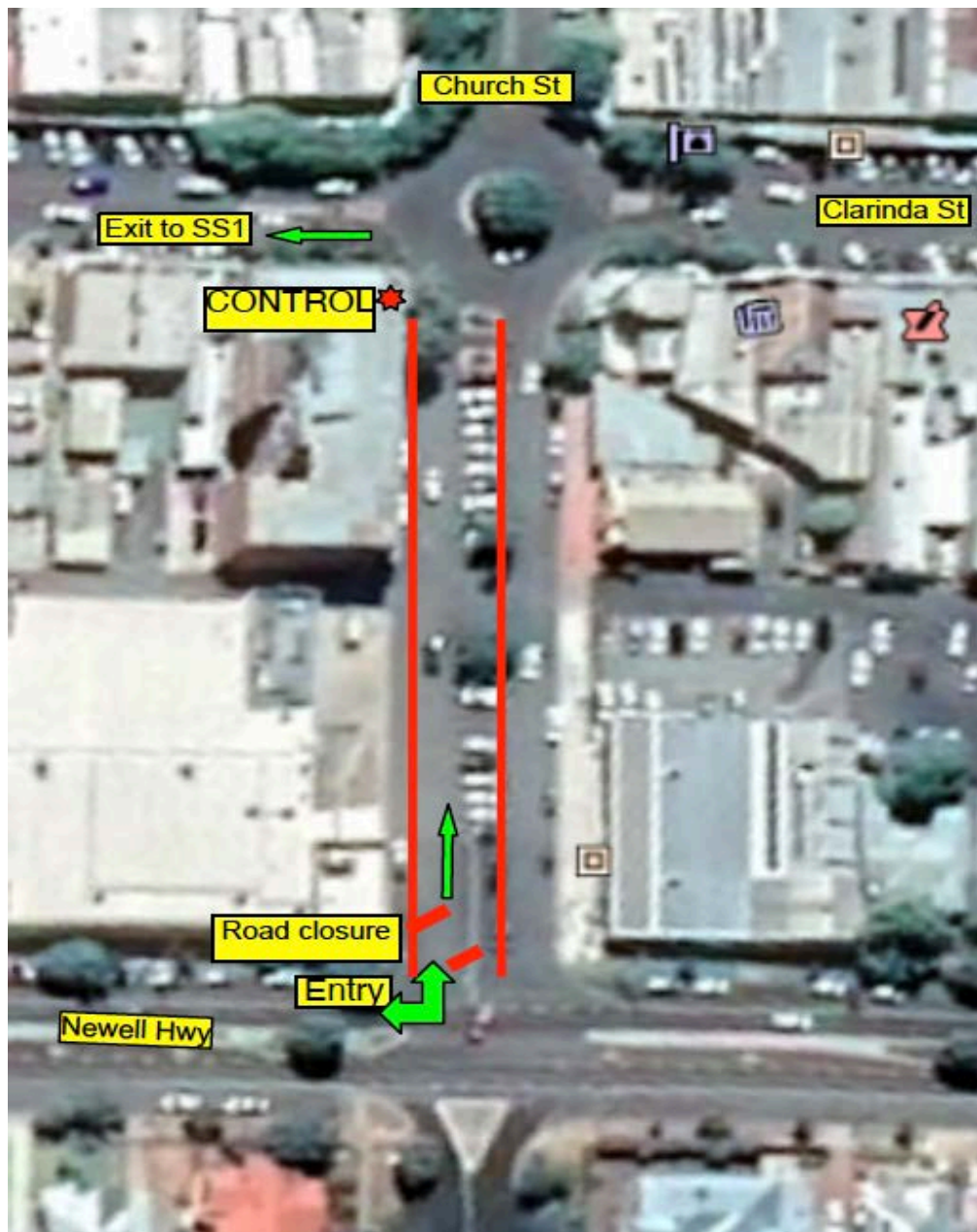
- crews will be called to the start arch for photographs – please follow instructions of the marshals.

### D3: WELCOME FUNCTION – SATURDAY 26 MARCH

A Welcome Function for competitors, crews and service crews, will be conducted as follows:

- Parkes Leagues Club 192 Clarinda Street
- 1800 - 1900 hours

### D4: START OF EVENT (Sunday 27th)



Cars are to assemble 30 min before due start time. Entry only off Newell Highway through road closure barrier. Park in herringbone back to the curb as instructed by officials. Please take advantage of the local traders.

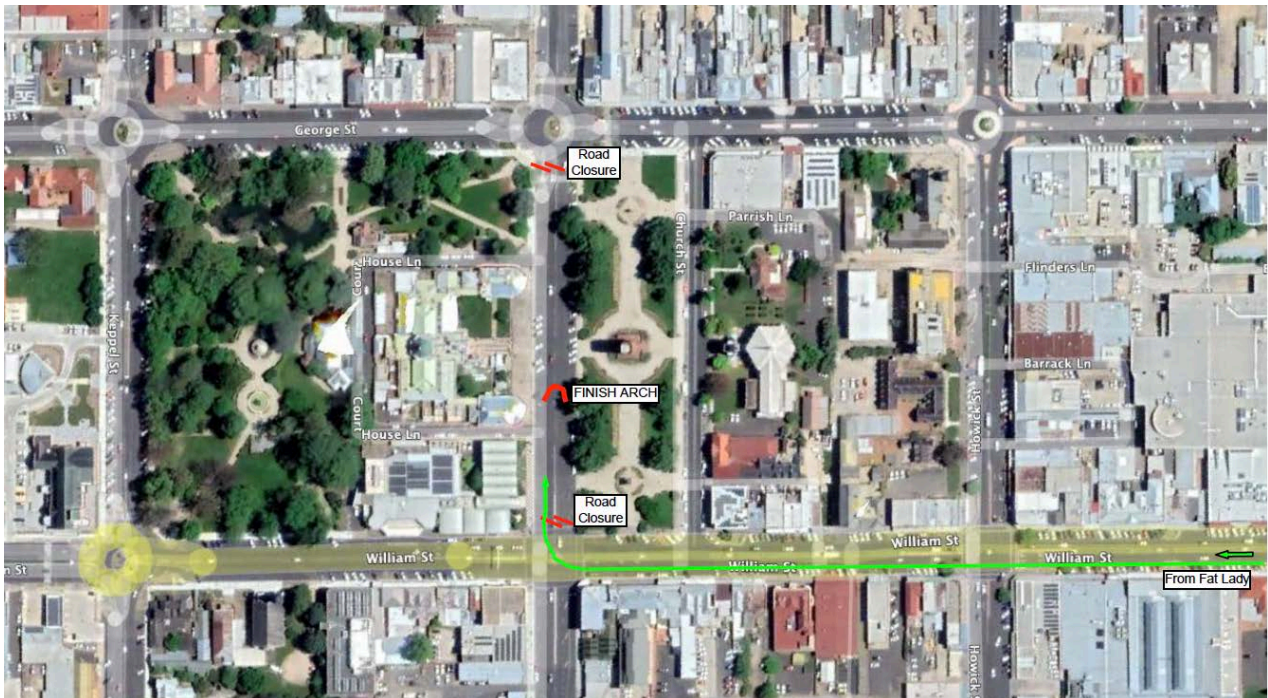
First car to depart at 0800 then others at 2 minute intervals.



#### D5: FINISH OF EVENT (Saturday 2nd April)

The finish of the event will be as follows:

- Saturday 2 April
- Russell Street, Bathurst



- The first Regularity vehicle is due at approximately 1300 and first Rally vehicle at 1330. Vehicles will be placed in impound until the arrival of the last vehicle;
- On arrival crews will be photographed alongside their vehicles under event's arch;

#### D6: PRESENTATION FUNCTION

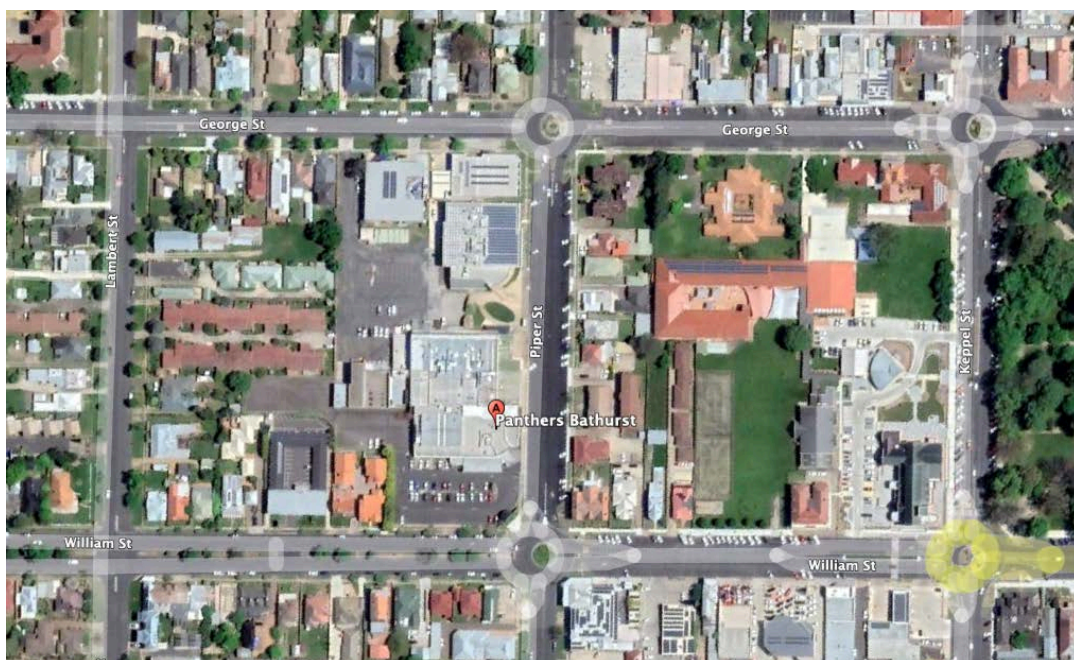
The Presentation Function will be conducted as follows:

Saturday 2 April

Panthers Leagues Club

Cnr. William and Piper Streets BATHURST

1830 to 2230





The evening will be one solely dedicated to crews and officials, with no other entertainment provided.

An entry ticket for each competitor is included in the event entry fee and covers pre-dinner canapes with drinks (except spirits) and a 3 course meal (entrée main and sweets) with some wine placed on tables and thereafter refreshments will be at each individual's cost during the evening. Tickets can be collected at Documentation.

Extra tickets cost **\$100** each and may be ordered at any time and the latest time for ordering extra tickets is 2000 hours on Tuesday 29 March at the event headquarters.

Table allocations may be booked when collecting tickets at Documentation.

## SECTION E: DOCUMENTATION & SCRUTINY

### E1: DOCUMENTATION (refer to SR501)

#### Documentation

Documentation will take place as follows:

- Friday 25 and Saturday 26 March
- Parkes Showground, off Mitchell Street
- Documentation times: Fri 0830 to 1800; Sat 0830 to 1000; actual report times will be issued in a Bulletin prior to the event.



Crews must report to documentation PRIOR to reporting to scrutiny. Crews are reminded of the penalty for reporting late for documentation (SR501.2). At documentation crew members are required to:

- Pay any monies outstanding (fees, extra presentation tickets, extra service crew nominations, merchandise);
- Ensure that the entry form has been signed by all crew members;
- Present MOTORSPORT AUSTRALIA Member Card and Pass Book for Australian competitors and crew members;
- Present ASN competition licences and MOTORSPORT AUSTRALIA Overseas VISA permits for foreign crew members;
- Present civil driving licences of crew members who will be driving;
- Provide proof of ownership (and permission to enter the vehicle if a member of the crew is not the bona-fide owner)#;
- Present the vehicle registration document;

- Present proof of third party insurance for the vehicle (if this is not issued in conjunction with the vehicle registration document);
- Present an “extension” of the “Compulsory Third Party Insurance Policy for Sporting Activities” for vehicles registered in Qld;
- Finalise service crew registration;
- Complete a Medical Questionnaire for MIV Crews (and place in a sealed container).

*# Note: if the entrant (ie: bone-fide owner of the vehicle) is not a crew member a document from the bone-fide owner stating that permission is granted for the vehicle to be used in the event must be presented at documentation (if appropriate signed by a company manager).*

And collect:

- Competing crew personal identification ('wrist bands' and 'swingers') and vehicle decals;
- Service crew swingers and vehicle decals;
- Presentation tickets (for competing crew) and order any extra tickets;
- Prologue/Day One road book;
- RallySafe unit.

## **E2: SCRUTINY (refer to SR502 & 503)**

### **Pre-event**

Report times for Pre-event Scrutiny will be issued at Documentation, and will take place as follows:

- Parkes Showground, off Mitchell Street (see map above);
- Scrutiny hours will be: Friday 0830 to 1900; Saturday 0830 to 1100; individual report times will be issued at completion of documentation.

Crews are reminded of penalties for late arrival (SR502.2). Pre-event scrutiny of vehicles will be of a general nature:

- Check of vehicle make and model;
- Engine and chassis numbers agree with those shown on the certificate of registration or permit;
- Apparent conformity of the vehicle to the technical description document and the vehicle category for which it was entered;
- The presence of mandatory safety and emergency items;
- Apparent mechanical reliability;
- Correct placement of organisers decals on the vehicle (refer to SR Section Four)
- Acceptable standard of appearance of the vehicle;
- Present a Vehicle Log Book.

Self-scrutiny forms are online and must be sent to Chief Scrutineer.

Any vehicle not conforming to the scrutiny or technical regulations, and which are not corrected, or appropriately re-classified, will be denied permission to start the event.

Apparel must also be presented for checking that it meets the standards required (refer to Supplementary Regulation 302.6).

### **During-event**

Vehicles will be checked by scrutineers immediately after booking in at the end of each day and any issues requiring attention must be addressed and approved by the scrutineers before the crew can start the next day.

### **Post-event**

On arrival at the finish of the last Day, vehicles will be placed in an impound and held until after the last vehicle arrives. Post-event scrutiny, if any, will take place at this location. Crews will have up to 15 minutes after the last vehicle (in their class) arrives in which to lodge any protest on the course for Day 7, and against any vehicle. Vehicles will be released by the Chief Scrutineer under instructions from the Clerk of Course.

## **SECTION F: COURSE STATISTICS**

### **F1: START/FINISH TIMES**

Summary of Schedule Start/Finish Times – First Vehicle (subject to change at any time):

Day	Day	Time Start	Time Finish
Prol	Saturday 26 March	1300	1500
1	Sunday 27	0800	1600
2	Monday 28	0800	1535
3	Tuesday 29	0900	1400

4	Wednesday 30	0930	1410
5	Thursday 31	0900	1505
6	Friday 1 April	0900	1505
7	Saturday 2	1000	1300

## F2: SUMMARY OF DISTANCES

Day	Number of Special Stages/ Length of Stages (km) (rounded)	Transport km	Competitive km	Total km	% Competitive
1 - Sun	15#, 21, 65#, 19, 17	342	137	478	28
2 - Mon	22, 39#, 11, 15#, 10	336	97	432	22
3 - Tue	27, 24*, 15*, 12*, 17	192	130	286	33
4 - Wed	22, 13*, 8*, 31, 22	130	97	226	34
5 - Thu	9*, 10*, 27*, 10*	312	75	368	14
6 - Fri	11, 14, 22, 36, 12	209	94	303	31
7 - Sat	26, 8, 17*	94	51	148	35
<b>Totals</b>		<b>1,615</b>	<b>681</b>	<b>2,241</b>	<b>28</b>

# Private Property, \* Shire Roads, Remainder State Forests

## F3: REFUEL INFORMATION

Distances between refuelling opportunities –

### Day 1

	<b>Service 1</b>	<b>Service 2</b>	<b>Service 3</b>
Time Allowed	15 minutes	45 minutes	15 minutes
Location	After SS2	Condobolin Showgrounds	After SS4
After	184km	142km	31km

### Day 2

	<b>Service 1</b>	<b>Service 2</b>	<b>Service 3</b>
Time Allowed	15 minutes	45 minutes	15 minutes
Location	After SS6	Condobolin after SS8	After SS9
After	102km	196km	41km

### Day 3

	<b>Service 1</b>	<b>Service 2</b>	<b>Service 3</b>	<b>Orange</b>
Time Allowed	15 minutes	45 minutes	15 mins	
Location	After SS11	End SS13 Molong Lunch	After SS14	
After	57km	125km	62km	41km

### Day 4

	<b>Service 1</b>	<b>Service 2</b>	<b>Service 3</b>
Time Allowed	15 minutes	45 minutes	
Location	End of SS16 Carcoar	End of SS18 Carcoar	End SS20 Orange
After	77km	35km	120/104

### Day 5

	<b>Service 1</b>	<b>Service 2</b>	<b>Bathurst</b>
Time Allowed	15 minutes	45 mins	
Location	After SS22 Sofala	After SS4 Sofala	
After	126.86km	102.08km	79.91km

### Day 6

	<b>Service 1</b>	<b>Service 2</b>	<b>Service 3</b>	<b>Bathurst</b>
Time Allowed	15 minutes	Lunch & Service of 45 mins	15 minutes	
Location	At end of SS27 Black Springs	Black Springs	At end of SS29 Black Springs	
After	105km	39km	65km	93km

## Day 7

	Service 1	Bathurst
Time Allowed	15 minutes	
Location	After SS341	
After	169km	77km

### SECTION G: DURING-EVENT ACTIVITIES

#### G1: PROLOGUE (Saturday 26)

A 10.33km Prologue will be conducted 20km west of Parkes off the Henry Parkes Drive (to Condobolin). It will be conducted between 1330 and 1600 hours (including for the Regularity) and details will be contained in the Prologue/Day One road book which will be issued at Documentation. Times taken over the Prologue, which can be used as a 'shakedown' by crews, will not determine the event start order but will assist the organisers with its compilation.



#### G2: DAILY STARTS

Daily starts will be conducted as follows, with the first vehicle leaving at times listed in Article F1 above:

Sunday, Monday & Tuesday - Parkes – Church Street

Wednesday & Thursday – Orange - Showgrounds

Friday & Saturday – Bathurst – Rydges

- A bulletin, with the previous days scores and any other information issued by the organisers, will be issued EACH morning and crews are to report to the start control at least **30 minutes** prior to their start time to collect the bulletin.
- Any crew starting a day after the officially published time will be penalised 1 min/min late against late time.

#### G3: FINISH AT END OF EACH DAY (Sunday to Friday)

Each day will finish as follows, with the first car due as listed in F1 above:

Sunday & Monday - Parkes - Showgrounds

Tuesday & Wednesday - Orange - Showgrounds

Thursday & Friday - Bathurst –Opposite Rydges

The routine at the end of each day will be:

#### Arrival

Booking into the final control. There is no penalty for booking in early, but you will be penalised if you are late. The control official will keep your road card and any forms (Incident Report Form, Gossip/Publicity Form) you may wish to hand in.

#### Scrutiny

Immediately after booking in, scrutineers will look over the vehicle. If all is in order a 'Ready to Start Day' sticker will be placed on the vehicle; if there are any defects these will be advised to you and must be rectified and passed by the scrutineers before you can start the next Day.

#### Competitor Relations Officer

The Competitor Relations Officer will be located at the arrival location or at HQ.

#### Road Books for Next Day

These will be issued when you book in at the end of the day. If very late and the control is unmanned, the book will be available at HQ. Contact the CRO if necessary.

#### Reports/Claims/Protest

Any reports to lodge or claims to make MUST be lodged with the Competitor Relations Officer, or with HQ, WITHIN TWO HOURS of arrival at the end of the last transport section each day, except Day 7 when it must be WITHIN 15 minutes.

- Enquiry on any alleged mistake, irregularity or action on the course for the day;
- Report on overtaking;
- Refund of compassionate time (SR618 – read this before lodging a claim!!)
- Any accident of any type which results in injury; or damage to another vehicle or property or stock – an Incident Report Form MUST be lodged with the organisers, mainly for insurance purposes.

## SECTION H: COMPETITION ISSUES

### **H1: START ORDER (SR607)**

#### Prologue

The start order will be determined by the organisers and issued at Documentation.

#### Day One – Sunday 27

The start order, with times to report to the start, will be determined by the organisers and posted on the Official Notice Board at 1800 hours Saturday 26.

#### Days Two to Seven – Monday 28 to Saturday 2 April

The start order for these days, with time to report to the start each day, will be posted on the Official Notice Board each previous night as soon as practical.

The start order will be based on a computer calculated co-efficient, similar to the system used for the Australian Rally Championship.

- A Stage Performance Index (SPI) is calculated for each crew. The SPI is determined by dividing the fastest stage times by a crew's times and the value will always be less than 1. Note that the SPI for the fastest crew will be 1.
- An Event Performance Index (EPI) is calculated for each crew. The EPI will be best two thirds of the crews SPIs, with the worst third of a crew's SPI discounted – this removes the likelihood of an unrepresentative time where a crew may have been held up by dust, had a puncture or some mechanical problem with the vehicle which caused it not to perform to its peak performance, thus giving a truer indication of a crew's typical speed. Seeding is based on speed not on ability to nurse a slow vehicle through a stage.
- The start order for Day Two will be based on the EPI calculated on Day One's performances; thereafter each day's start order will be based on the EPI calculated on the accumulated performances to the end of the previous day.

Note that any crew which has missed at least one special stage shall not be placed in the starting order before the sixth placed crew which has not missed a stage (refer to SR607.5).

Upon completion of processing each evening, the final start order will be posted on the Official Notice Board and it is a good practice to always re-check the start order early in the morning to allow plenty of time to re-start at the correct time should there be changes after the evening posting.

### **H2: ROAD BOOKS / MAP BOOKS / SERVICE CREW INSTRUCTIONS**

#### **Road Books**

Road books will be issued as follows:



- Prologue and Day 1 book (combined) – at completion of documentation;
- Days 2, 3, 4, 5, 6 & 7– on arrival at the end of each day.

You MUST check these books (pages will be numbered) upon receiving them. If you have an incomplete road book or instructions see the CRO.

### **Service Crew Instructions**

Service crew instructions will be listed in one book, and this book will be issued at the completion of documentation. One set of instructions is issued as part of the entry fee, extra service registration is available for \$50 per set.

## **H3: COURSE CREWS**

### **Special Stage Set Up Crews**

Road Crews will man the start and finish controls of each special stage. There are ten Road Crews and they will travel round the course carrying out their specific tasks. They will arrive at the start of a stage no later than three hours before the first crew is due, and the crew manning the stage finish control will drive through the stage and set it up for competition. After the last crew and then the 'sweep car' have passed through the start control, the officials manning the start will travel through the stage and collect all equipment used in the stage set up.

### **Special Stage Course Check Car (Zero)**

The Zero Car will carry the Assistant Clerk of Course, as well as the Motorsport Australia Checker, and will pass through the course approximately an hour before the first crew and will check the setup of the stage. On arrival at the end of the stage this crew will declare the stage 'green', thus indicating it is ready for competition.

### **Sweep Car Crew**

Travelling immediately behind the last crew a Sweep Car will travel through the course and collect all paperwork, close controls and re-open any closed road(s). When this crew reaches the finish of each special stage it is declared 'black', which means the competition is over. The Sweep Crew is not responsible for stopping to assist crews who are experiencing problems but will take details and pass these on to the Recovery Crew and/or the HQ and/or service crews as soon as possible.

### **Recovery Crew**

A recovery vehicle will travel behind the field and provide assistance to any crew requiring it. They will remove any closed gate signs on the closed road sections. The recovery crews are not obliged to repair vehicles or tow them, although they may do so at their discretion.

## **H4: ASSISTANCE IN A SPECIAL STAGE**

### **SR 612.3 Assistance in a Special Stage**

- (1) Assistance between competing crews is permitted at any time:
  - if the route is completely blocked by a vehicle obstructing the defined roadway (ie: due to a vehicle having crashed, suffered a breakdown or becoming bogged, etc) the following crew/s may assist to remove the obstructing vehicle but time compensation will not be granted by the Organisers for doing so;
  - alternatively, crews may leave the defined roadway to get around the obstruction; in such a case if a vehicle subsequently becomes bogged no time compensation will be granted by the Organisers;
  - in such circumstances as above the special stage shall not be cancelled by the Clerk of the Course, even if a crew/s exceed the late time limit;
- (2) Assistance by service crews is forbidden on a special stage until after the passage of the Organiser's sweep vehicle.
- (3) If a salvage vehicle is engaged by the Organisers to clear the roadway and no time can be claimed by the action of the salvage crew assisting a crew. However, if crew arrives at an obstruction and is delayed through the failure of the salvage vehicle to clear the roadway, the crew may be signed in and out by the salvage crew and will not be debited with lost time for the delay.

## **H5: SPEED LIMITS**

There are different default speed limits:

- In built-up areas a default speed limit of 60 km/h applies, unless the town has gazetted a lower default speed limit. Many towns and communities have a default speed limit of 50 km/h or less. Where a 50 km/h (or other speed limit) default speed limit applies to a built-up area, a sign is placed on each road approaching that locality;
- The default speed limit outside built-up areas is 100 km/h.

If caught speeding a fine and loss of points could be applied by the NSW Police. Additionally, if the organisers receive officials reports on speeding additional penalties will be applied in accordance with SR616.2.

## **H6: GATES**

Gate on Special Stages - All gates will be open.

Gates on Transport Sections - Gates are to remain as found.

## **H7: SERVICE CREWS**

### **Registration**

Service Crews are required to be registered with the organisers using the registration form on the event's website. The first registration fee is included in the entry fee; each further crew costs \$50. A service crew identification 'swinger' will be issued for each registered crew member and should be worn. – these will be distributed at documentation. Each service vehicle will be issued with 2 **S** decals to be applied to the front and rear windscreens.

### **Instructions**

Service crew instructions for the entire event and service vehicle decals will be issued at Documentation. Service crews must follow the course outlined in the instructions and are not permitted to enter a special stage to provide assistance to a competing crew without authority of the organisers. This authority can be issued by crews in Zero, the Sweep and Recovery Officials, the official in charge of the start/finish of a special stage, or Rally Control. Under NO circumstances is a service crew to enter a special stage before the passage of the Sweep Vehicle and must be aware of the possibility of an oncoming competing crew which may have stopped and started again to drive out of the stage, either forwards to backwards.

### **Social Functions**

Competitors and service crew members are invited, at no charge, to the Welcome Function (Saturday 26, 1800 to 1900 hours).

Two tickets for the Presentation Function are included in the entry fee for the competing crew. Extra tickets cost \$100 each and they may be purchased pre-event ([pora1@bigpond.net.au](mailto:pora1@bigpond.net.au)), at Documentation, and at HQ after Documentation until 2000 hours on Tuesday 29th March. No guarantee of tickets can be offered by the organisers after this date due to catering numbers having to be advised to the function caterers at this time.

## **H8: SCORES AND RESULTS (SR802, 803 & 804)**

### **Progressive Scores (SR802)**

Scores (times and penalties) will be calculated as soon as possible and posted on the Official Notice Board at HQ. When a number have been processed (say 20) the scores will be placed on the website. Any enquiry can be lodged with the Competitor Relations Officer.

### **Results (SR803 and 804)**

#### **Days 1 to 4**

Partial Provisional Results will be published after the end of competition on Day 4 (on Wednesday 30). These will be posted at 1800 hours on the official notice board and will cover Day 1 to Day 4 and crews have one hour after they have been posted to lodge any protest. Once the above protest time has passed these will become Final Results and no protest can be lodged at a later time.

#### **Days 5 to 7**

Days 5 to 7 provisional results will be posted on the official notice board at 1600 hours Saturday 2 and will become final results one hour later if no protests are received.

Crews are reminded that any protests about any mistake, irregularity or action to the prejudice of the competitor must be lodged within two hours of arrival at the end of the Day. These type of protests CANNOT be lodged in conjunction with the posting of provisional results.

## **H9: DAN MURPHY SPIRIT OF THE CLASSIC OUTBACK TRIAL AWARD**

The Dan Murphy Spirit of the Classic Outback Trial Award will be made to the crew which shows the true 'spirit' of outback rallying, particularly in the determination to finish the event. Nomination forms may be submitted to the organisers and these will be available from the Headquarters.

## **SECTION I: INFORMATION CHANNELS AND PUBLICITY**

We'll be using our website and social media channels to stay in touch with you in the lead up to COT22. And, there are a few ways you can keep track of the event so you don't miss something important:

## **I1: THE CLASSIC OUTBACK TRIAL WEBSITE**

We will be using the COT website as our primary information channel. It will contain all of the event's news, forms, documents and some special noticeboards. There are a few ways to find things: the home page summarises the latest posts and has links to the special noticeboards; you can browse using navigation across the top or use search or the tag cloud in the footer of [classicoutbacktrial.com.au](http://classicoutbacktrial.com.au).

## **I2: OTHER WEBSITE POSTS**

We will be posting non-official information on the website too, under various headings like 'News', 'Galleries' and 'Competitor Guidance'. You'll find links to the most recent posts on the COT home page as well as links to all posts in the various headings. Click around!

## **I3: FOLLOWING THE COT WEBSITE**

You can 'follow' the COT website so that you will be sent an email notification every time we post something. When you're on our site, click on the "Follow" button on the bottom RH corner of your browser.

## **I4: COT22 ON SOCIAL MEDIA**

The Classic Outback Trial has a presence on Facebook, Instagram, Twitter and YouTube. We will share posts from the website through to these social media channels. As well, we will be posting other things of interest in the lead-up and during the event on Facebook and Instagram. You can find links to our social media pages in the footer of the website. Or search for us.

Regarding Facebook, remember that Facebook may not put everything we post into your news feed so there's a good chance you'll miss something if that's the only info channel you're watching. You can manage this a little – on our Facebook page click the down arrow next to the "liked" button in the banner. Here you can tell Facebook to put COT22 posts first in your news feed or ask for a notification when we post.

## **I5: USING SOCIAL MEDIA**

The Motorsport Australia Social Media Policy on how care should be taken when posting on social media – especially in relation to sensitive issues or serious incidents – can be referenced on the Motorsport Australia website at About>Policies>Social Media Policies and also Guidelines for the Use of Social Media.

## **I6: REPORTING DURING THE EVENT – OFFICIAL REPORTERS AND PHOTOGRAPHERS**

During the event we will post on the website regularly - usually each evening after the day's competition - as well as posting pics and stories direct to Facebook, Twitter and Instagram.

The COT reporter will be out there looking for stories. This year it will be Bruce Keys. Unlike previous years we will not be chasing sound grabs or video interviews. If you have something which you think would be newsworthy or others may be interested in, please speak to Bruce when you see him. Or, complete the 'Gossip Sheet/Publicity Form' in the back of the roadbook and pass it to one of them or hand it in with the road card at the control at the end of the day, or drop it into Rally Headquarters.

COT photographers will also be out on the stages capturing all the excitement of COT22. We will be posting a day summary and gallery of pictures each evening on the website. And, the media team will endeavour to post updates when they have web access during the days.

## **I7: FORMAL PHOTOGRAPH OF EACH CAR AT THE START ARCH BEFORE THE START**

On day of the Prologue (Saturday) a Ceremonial Start will be carried out with all cars passing under a COT arch. The event photographers will be present to take photographs of all the cars.

# **SECTION J: THE BOOK**

## **J:1 SAVE THE BOOK**

Have you enjoyed flicking through the 200 pages of the 2016 and 2018 Classic Outback Trial Storybook? Does your book sit proudly in a high traffic area, or is your book a talking point for attracting new sponsors? If not, it should be! Unfortunately, the 2022 Storybook is in Jeopardy.

Like many businesses we too have seen financial hardship as a result of Covid-19, postponing the event twice comes at a cost and without a major sponsor to offset the expense of putting on a world class event something has to go. We have enjoyed producing a 200 page hardcover book at an affordable price but unfortunately, this being the last event, the Storybook is not an expense we can cover.

However, we might have a solution. Sponsorship. We need you! If we can attract enough book sponsors not only could we have a book, we could lower the price too! Here's your chance to be part of history in a timeless, high quality hardcover publication.

Please help us save the book and contact Phil Bernadou directly for more exciting information.



## SECTION K: RALLYSAFE



Just to reiterate, from the original RallySafe Service Proposal,

"All Regularity competitors must purchase and have a RallySafe Power Loom fitted prior to arrival at Documentation and Scrutiny if their vehicle does not have an OBD2 socket"

1 Competitors must have a Rally Safe wiring loom, antennas and mounting kit installed prior to scrutiny. This is a one off purchase via the Rally Safe web shop see <https://shop.statusas.com/shop/category/rallysafe/> The easiest way to do this is to purchase the All-In-One Fitting Kit. This kit contains everything necessary to install RallySafe in the vehicle, and by using the options available, it can easily be customised to the vehicle's specifications. The installation cost is the responsibility of the competitor (it is not included in the entry fee). If any spare or replacement parts are required, the RallySafe online store contains everything that is in a fitting kit.

2 Installation instructions are available at <https://rallysafe.com.au/competitors-tm/>

3 The Rally Safe system must be wired to permanent 12v power (ie NOT via the ignition switch or any 'kill' switch)

4 The Rally Safe GPS tracking unit screen will be available at the event, prior to the start. The RallySafe unit (screen) will be available at documentation and may be collected at any time from 0830 until 1800 on Friday and 0830 until 1000 on Saturday (eg: crews do not have to wait until their documentation report time). It is a requirement that the units are installed and powered up correctly as soon as practically possible and no later than 1000 Saturday.

5 The cost of the hire of Rally Safe GPS tracking unit screen for the Event is included in the entry fee.

6 Competitors should familiarise themselves with the use of the RallySafe by reference to the video and manual available at <https://rallysafe.com.au/competitors-tm/>

7 Any misuse of the equipment will result in the competitor being reported to the Stewards of the Meeting who may impose penalties that may go as far as disqualification.

8 Should a competitor retire, they must return the tracking unit screen to Rally Headquarters as soon as possible. DO NOT TAKE THEM HOME.

9 The tracking unit screens must be removed from the rally cars at the final control. It is solely the competitor's responsibility to return the Rally Safe tracking unit screen to the event organisers immediately after the event. The competitor will be responsible for reimbursing RallySafe for the cost of any unit not returned for whatever reason. The Competitor will be responsible for reimbursing RallySafe for the cost of any repairs to or replacement of a RallySafe unit. Information on insurance against RallySafe unit loss or damage can be found at: [shop.statusas.com/shop/category/rallysafe/damage-waivers/](https://shop.statusas.com/shop/category/rallysafe/damage-waivers/)

10 Any misuse of the equipment will result in the Competitor being reported to the Stewards of the Meeting who may impose penalties up to exclusion.

11 The RallySafe units will be used as the primary timing system throughout the event, recording vehicle movement times on both special stages and transport sections.

The organisers will use a manual system with officials at controls recording times on control cards and road cards, the latter being carried by crews, and this system being used as a backup.

Although the officials timepieces will be synchronised with the RallySafe units there may, on occasions, be a variation between the two systems. This may particularly occur at the end of special stages with the officials recording times using the 'line-of-sight' procedure. Crews are not to be confused if the times do vary as the RallySafe time will apply.